

## Land Reallocation of Part of Bona 2:17 to Bona 2:37

Date 04.04.2025

Bona Motala Sweden

I, Dan Even, ID: 322270422, the sole owner of Bona 2:37 and Bona 2:17, located in Bona, Motala Municipality, Östergötland County, Sweden, hereby declare my intention to reallocate part of Bona 2:17 to Bona 2:37.

The allocated land is located east from 2:37, the cut of point being the road directly after the canal to the north, the road to the east, and the neighboring lot Bona 2:39. The area comprises 1.5 hectare (15000 sq.m.)

The west-most coordinate is: 58°38'52.1"N 15°3'17.8"E

The north-most coordinate is: 58°38'54.4"N 15°3'25.4"E

The east-most coordinate is: 58°38'51.5"N 15°3'29.3"E

The south-most coordinate is: 58°38'48.6"N 15°3'28.2"E

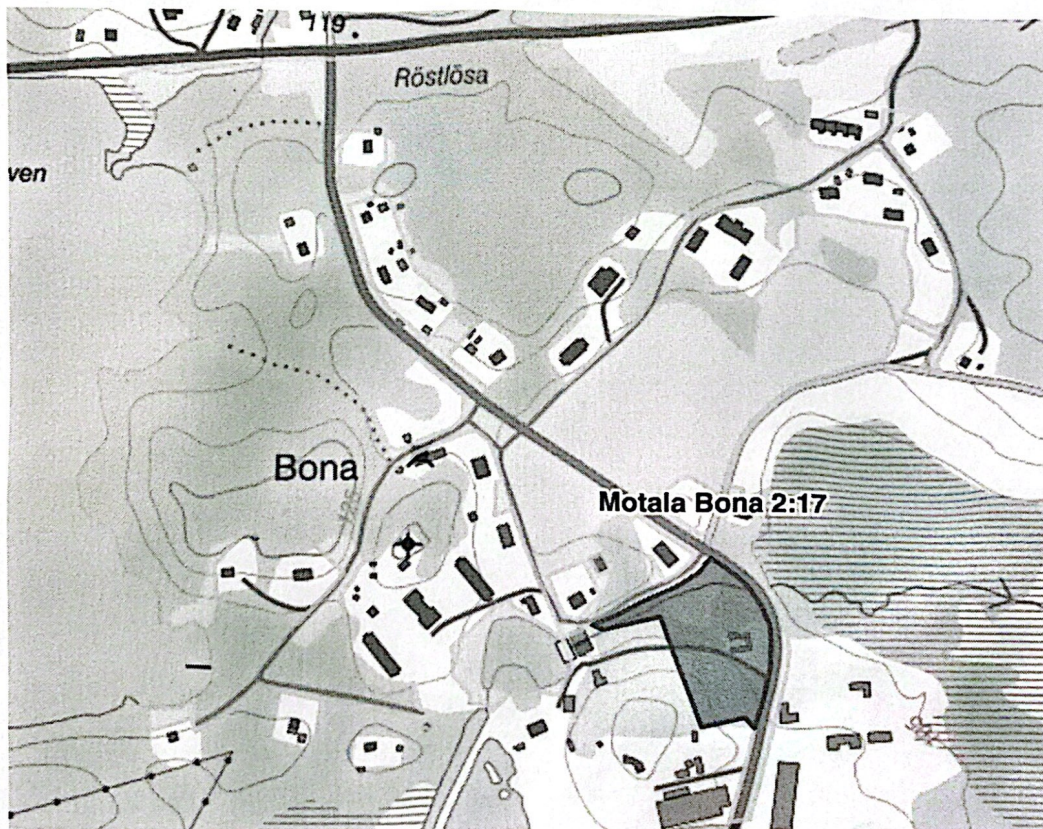


Image A

Image A: 2:17 with the rented land highlighted, zoomed out.

Image B: 2:17 with the rented land highlighted, zoomed in.

Image C: 2:37 with the rented land highlighted.



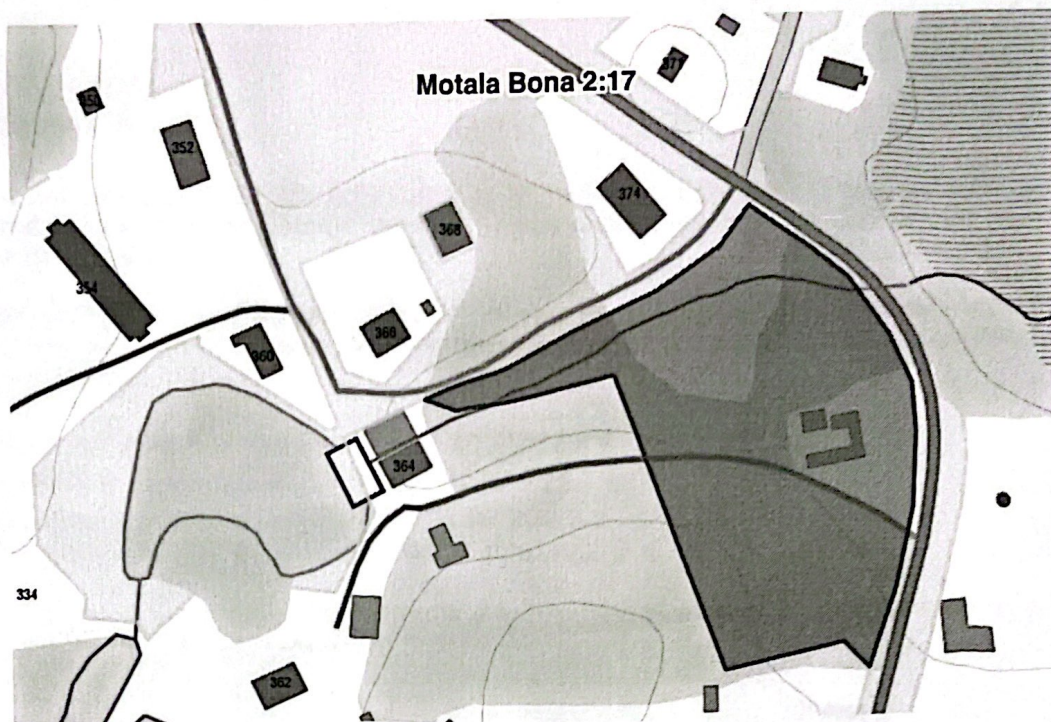


Image B

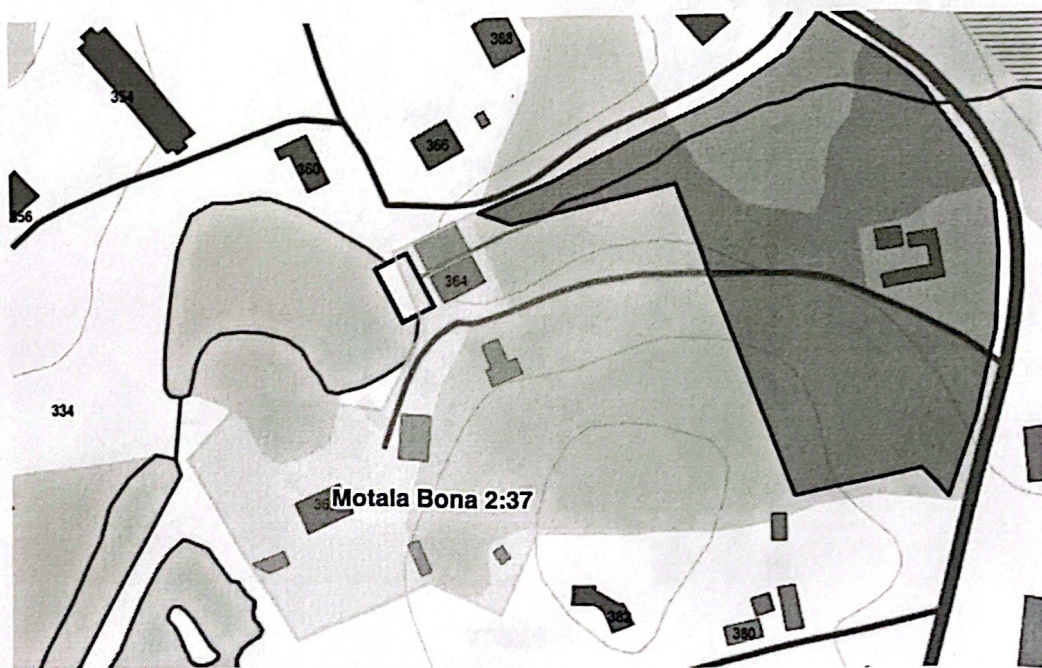


Image C

*DE*  
 Dan Even